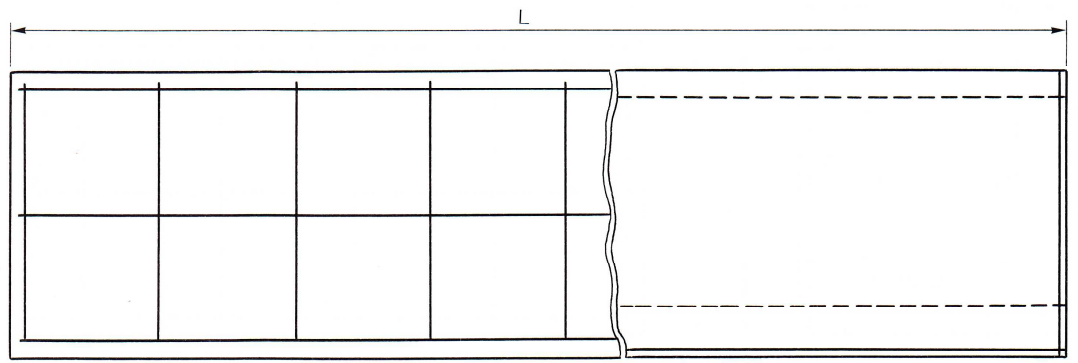
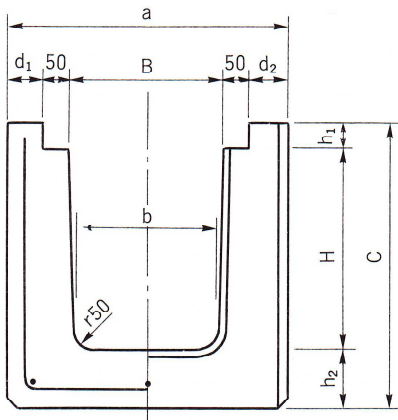
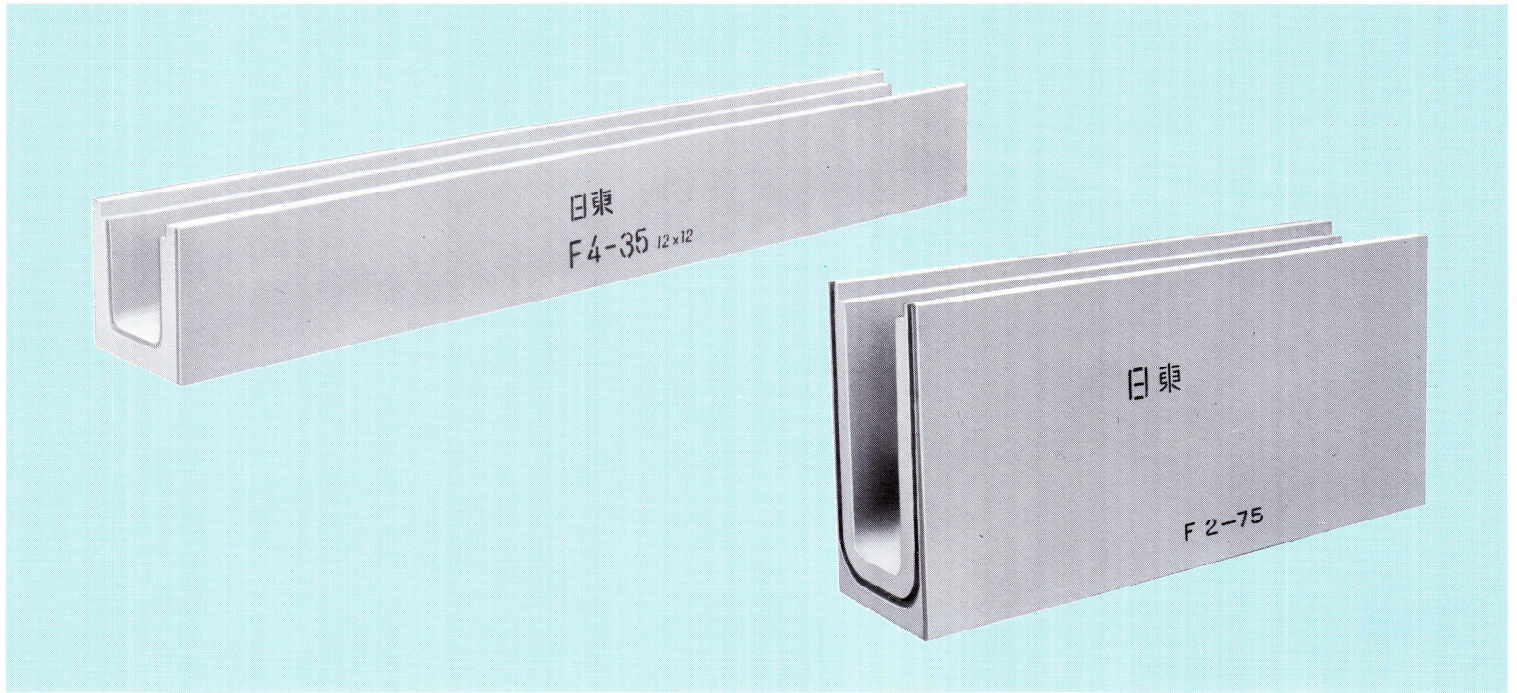


Fタイプ (120×120) ●歩道用



■寸法表

呼び名	寸法 (mm)										参考重量 (kg)
	B	H	L	a	b	c	d ₁	d ₂	h ₁	h ₂	
F4-30	300	300	4,000	540	290	450	70	70	50	100	1,277
F4-35	"	350	"	"	"	500	"	"	"	"	1,392
F4-40	"	400	"	"	"	550	"	"	"	"	1,504
F4-45	"	450	"	"	"	600	"	"	"	"	1,620
F4-50	"	500	"	"	"	650	"	"	"	"	1,734
F4-55	"	550	"	"	"	700	"	"	"	"	1,850
F2-55	"	550	2,000	"	"	700	"	"	"	"	925
F2-60	"	600	"	"	"	750	"	"	"	"	983
F2-65	"	650	"	"	"	800	"	"	"	"	1,043
F2-75	"	750	"	"	"	950	"	"	"	150	1,309
F2-85	"	850	"	"	"	1,050	"	"	"	"	1,427
F2-95(30)	"	950	"	"	"	1,150	"	"	"	"	1,545
寸法の許容差	±3	±3	±10 [※]	±3	±3	±3	±3	±3	±3	±3	—

※L=2,000mmの場合の許容差は±5mmとします。