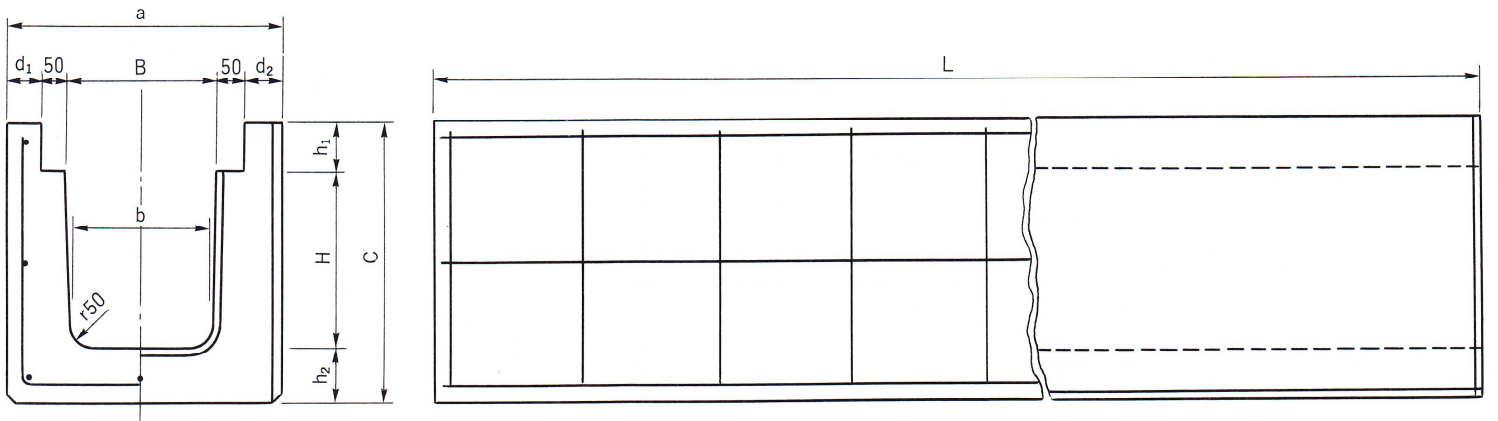
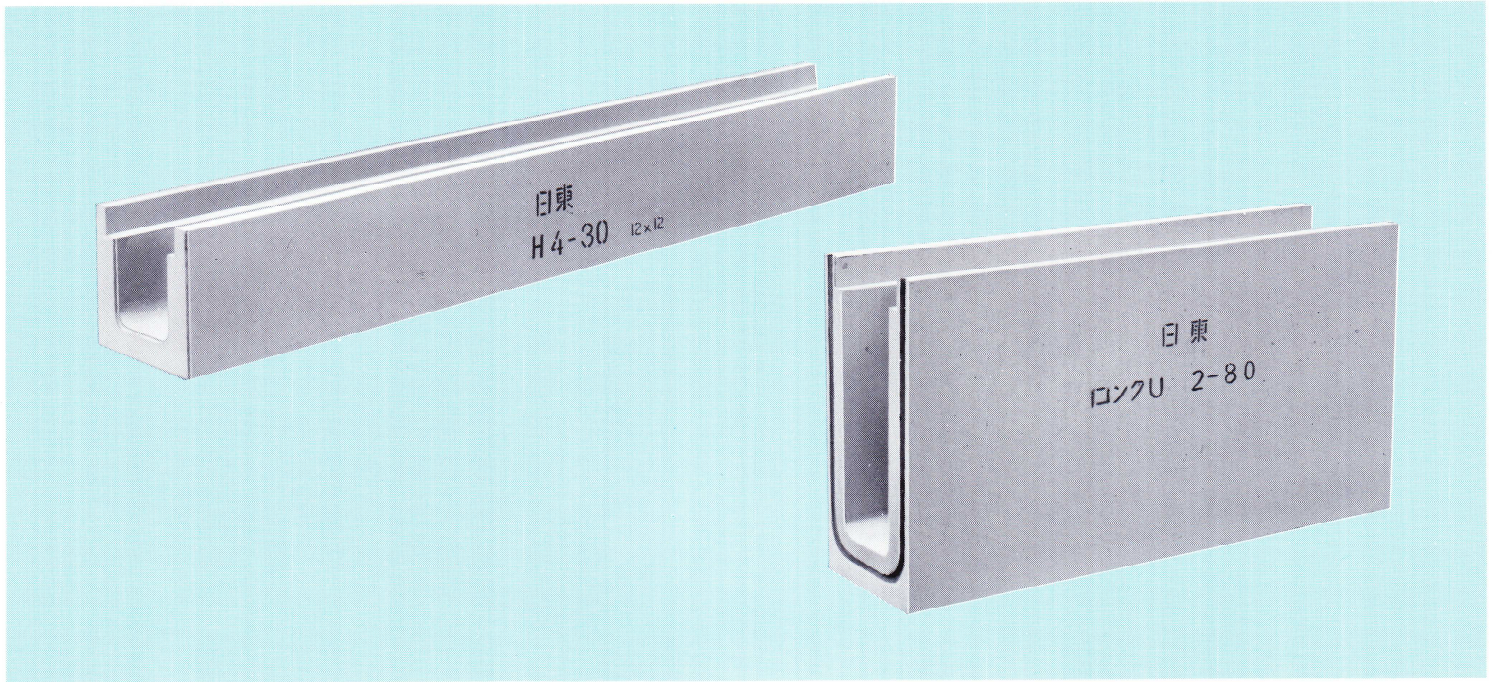


Hタイプ (120×120) ●軽車両用



■寸法表

呼び名	寸法 (mm)										参考重量 (kg)
	B	H	L	a	b	c	d ₁	d ₂	h ₁	h ₂	
H4-24A	240	240	4,000	480	230	440	70	70	100	100	1,148
H4-30	300	300	"	540	290	500	"	"	"	"	1,342
H4-35	"	350	"	"	"	550	"	"	"	"	1,457
H4-40	"	400	"	"	"	600	"	"	"	"	1,573
H4-45	"	450	"	"	"	650	"	"	"	"	1,687
H4-50	"	500	"	"	"	700	"	"	"	"	1,803
H2-55	"	550	2,000	"	"	750	"	"	"	"	963
H2-60	"	600	"	"	"	800	"	"	"	"	1,020
H2-70	"	700	"	"	"	950	"	"	"	150	1,284
H2-80	"	800	"	"	"	1,050	"	"	"	"	1,402
H2-90	"	900	"	"	"	1,150	"	"	"	"	1,519
寸法の許容差	±3	±3	±10*	±3	±3	+3	±3	±3	±3	±3	—

*L=2,000mmの場合の許容差は±5mmとします。